

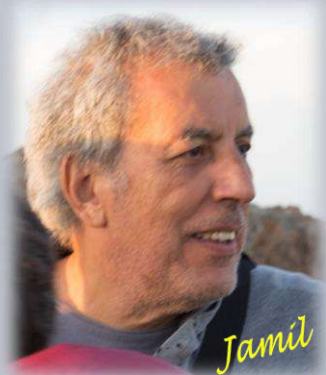
Mission SAN

*semaine 32
du 4 au 12 août 2018*



SOCIÉTÉ
d'ASTRONOMIE
DE NANTES

Membres de la mission SAN



Marine Combes (première montée)

Christophe Pellier

Jean-François Hélas

Dominique Rabu

Jamil Haddadi

Samuel Clouet

Pierre Valeau









PR Pic de Château
Renard
Alt : 2989 m









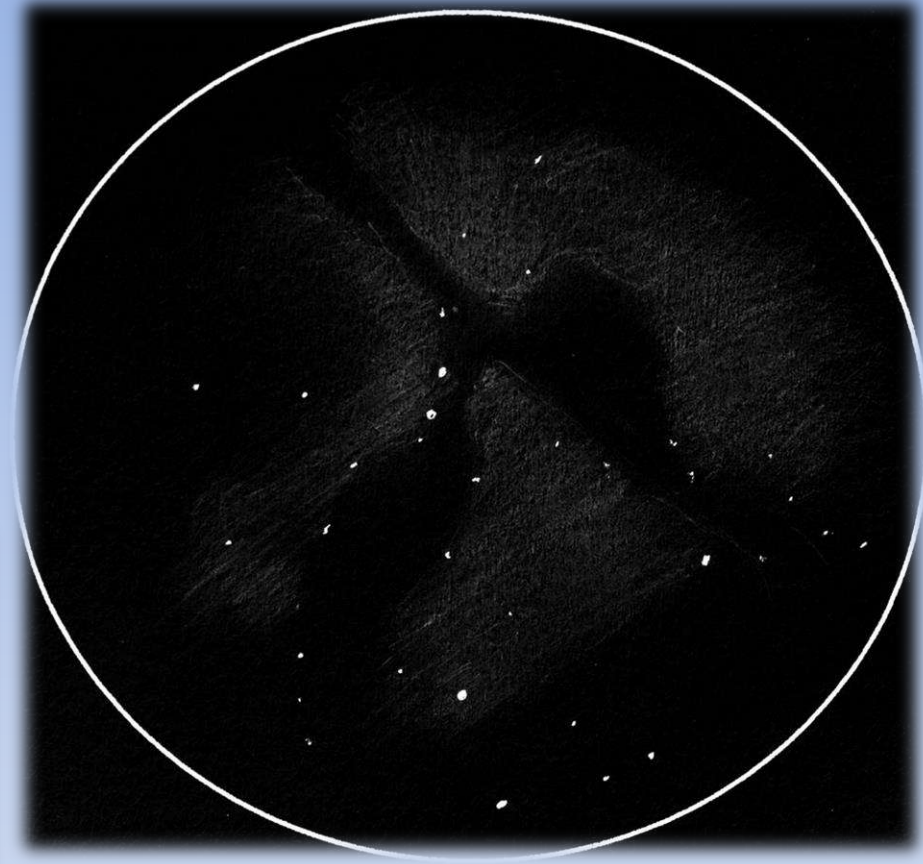




A photograph of an astronomical telescope mounted on a red base, positioned on a wooden structure. The telescope is pointed towards a snowy mountain range under a twilight sky. The text 'Les Observations Astronomiques' is overlaid in a white, cursive font.

*Les
Observations
Astronomiques*

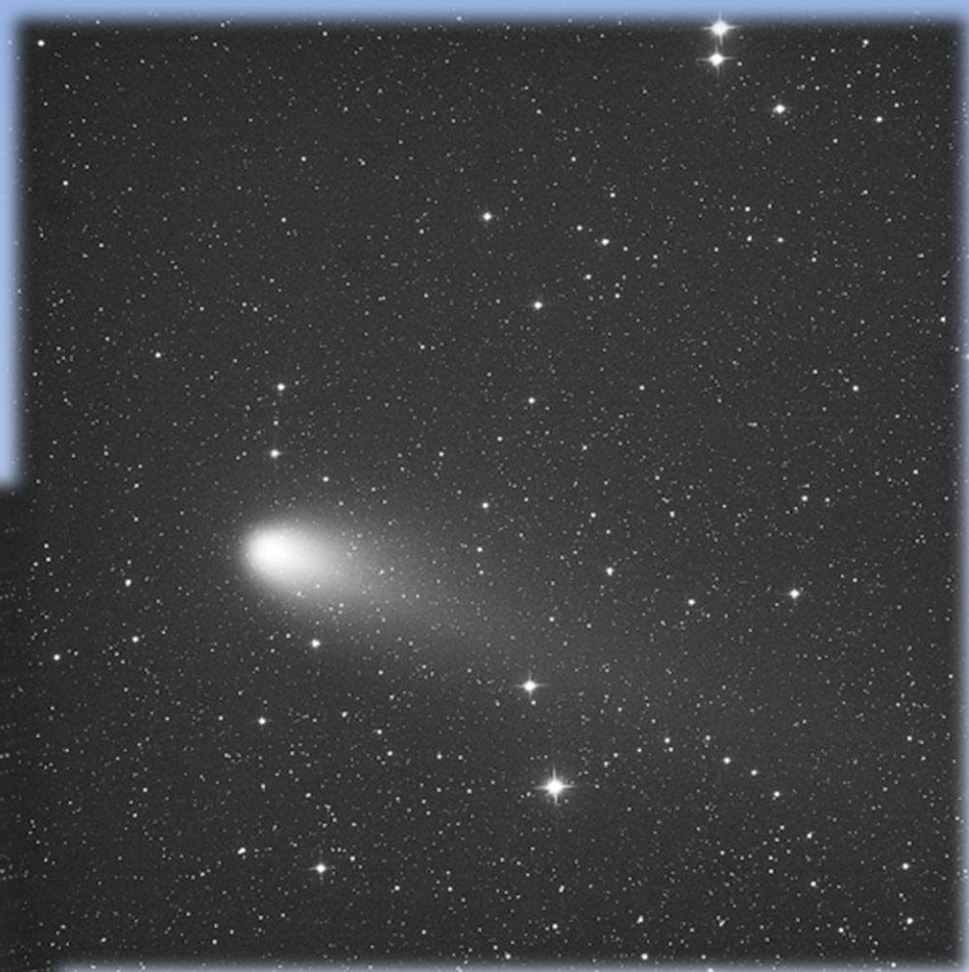
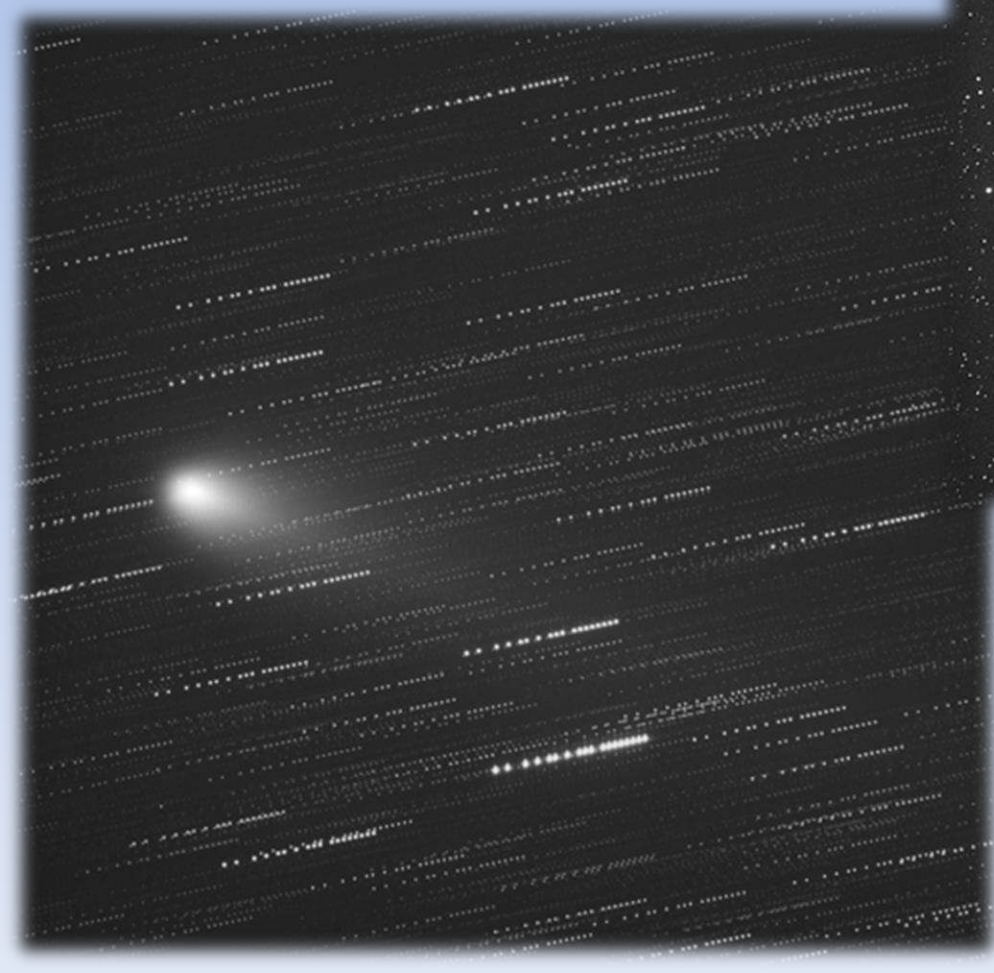
Quelques dessins



*Des photos d'ambiance
nocturne*



La comète 21P/Giacobini-Zinner

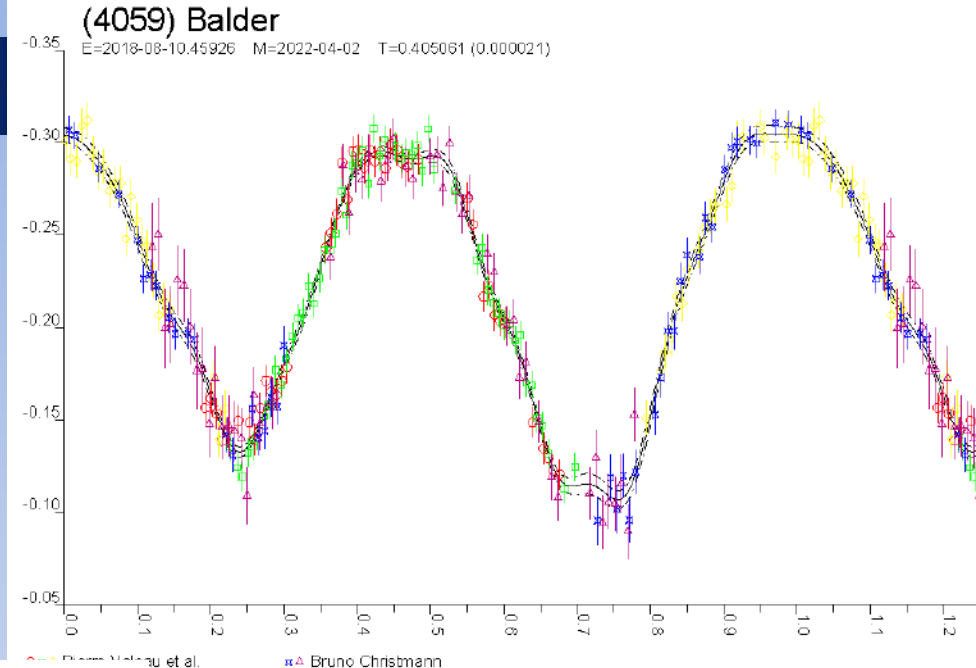


CdR de deux astéroïdes

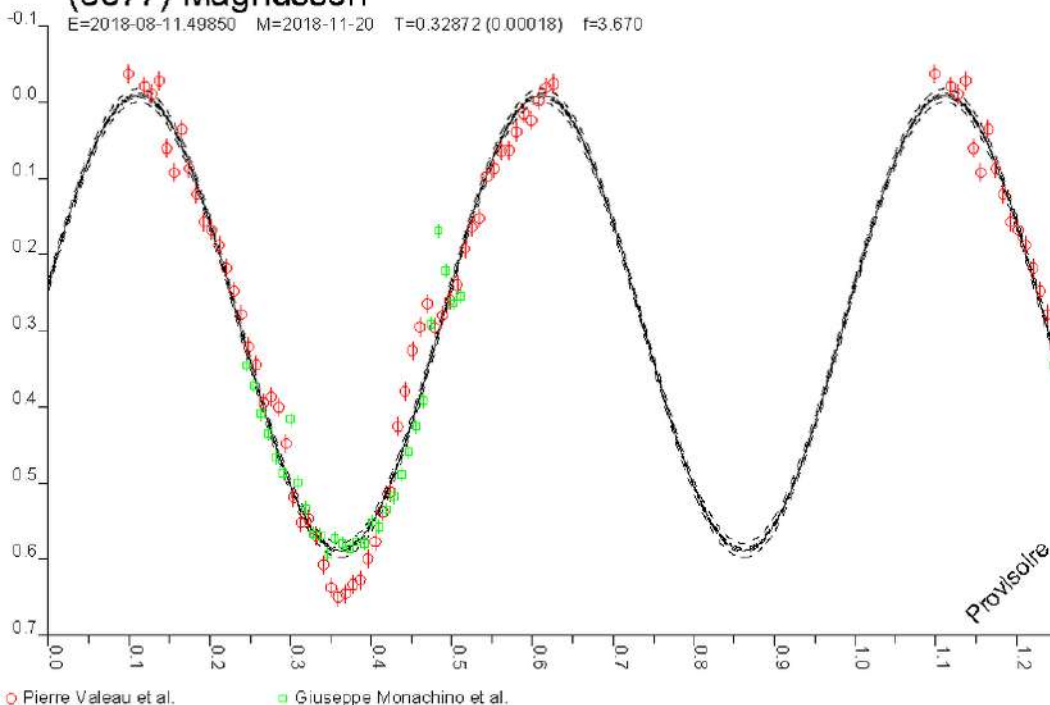
(4059) Balder

Période déterminée après 3 nuits d'observation.

Confirmée avec les données de Bruno Christman.



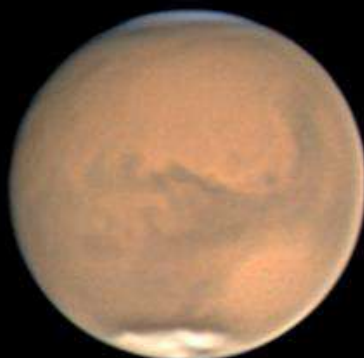
(3677) Magnusson



(3677) Magnusson

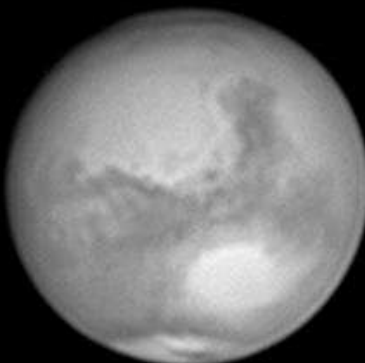
2 nuits d'observation avec l'aide de l'équipe d'Olympus Mons. Trop peu de données pour une détermination précise de la période.

RGB



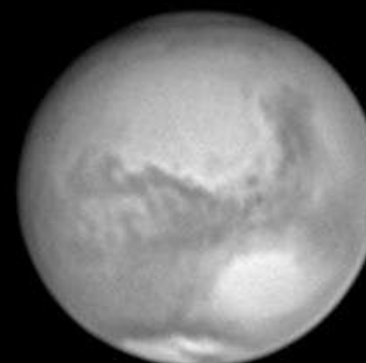
334°
00 H 10,5 UT
2x3 mn

IR 800 nm+



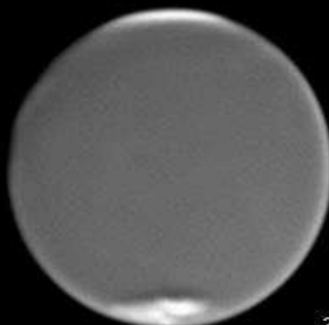
314°
22 H 47,5 UT
3x3 mn

IR 740 nm+



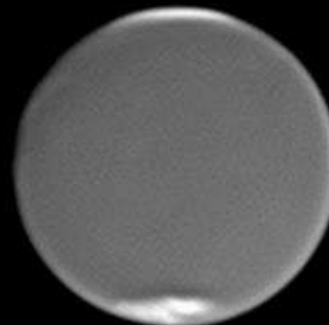
323°
23 H 26,2 UT
2x3 mn

B 425/50 nm



327°
23 H 40,6 UT
3x3 mn

B 436/10 nm



330°
23 H 52,7 UT
3x3 mn



Christophe Pellier/SAN/AstroQueyras

SW Flextube 305
ASI224MC/ADC/IR-cut
ASI290MM (ADC for B)

SATURN

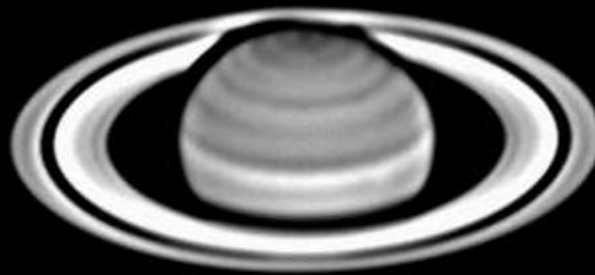
6 August 2018

Ls 103

Dia 17,9"

De+26,4

IR 685 nm+



22 H 05 - 22 H 15 UT



Christophe Pellier/SAN/AstroQueyras

SW Flextube 305

ASI290MM

SATURN

8 August 2018

Ls 104

Dia 17,8"

De +26,5

RGB



21 H 00 - 21 H 13 UT



Christophe Pellier/SAN/AstroQueyras

SW Flextube 305
ASI224MC/ADC/IR-cut

SATURN

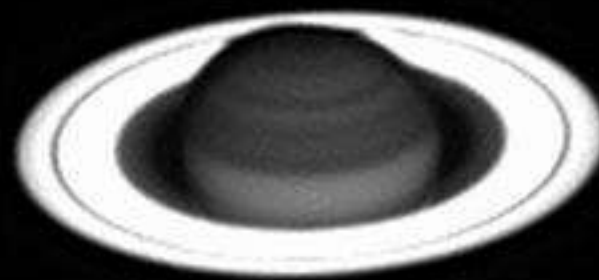
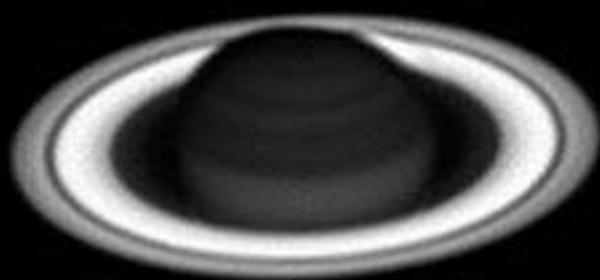
8 August 2018

Ls 104

Dia 17,8"

De +26,5

CH4 890/18 nm



21 H 39,8 UT

I 132 III 171

Video+Altaz derotation 30 mn



Christophe Pellier/SAN/AstroQueyras

SW Flextube 305

ASI290MM

URANUS

11 August 2018

Ls 44
Dia 3,6"
De +44,2



Ariel

IR 685 nm+



Miranda



Titania



153°

02 H 42,0 UT

Video derotation 20 mn

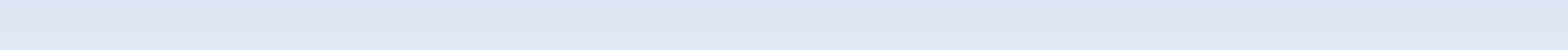


Umbriel



500 mm Ritchey-Chretien F/8
ASI290MM

Christophe Pellier/SAN/AstroQueyras









L'équipe de la SAN a due se dédoubler pour pouvoir réaliser la « Petite » maquette de M100. (vue du haut du Pic de Château Renard)